

AXIS Environment Monitoring System

AEMS1



INTRODUCTION

Axis Environment Monitoring System is one of the leading cloud-based Centralized Environment Monitoring System. Axis Analytics provides unmatched functionality by gathering data from remote sensors and analyzers and provides real-time data on a single dashboard. Being cloud-based, Axis Analytics is accessible from anywhere, can be used on multiple devices, is extremely easy to use, and provides customizable MIS and visual GUI, along with multiple downloadable formats.

Axis EMS can also help in regulatory compliance by providing tool for uploading the data to Central Pollution Control board (CPCB) database.

By combining Axis EMS, hardware, wireless communications, and sensors, our industry-leading solutions help industries by improving safety, sustainability, and compliance, thereby increasing their productivity. Timely alerts via email, texts, or in-application notifications allow industries to manage their problems in real-time, such as timely water conservation procedures and operations, as well as the installation and repair of sensors and equipment.

BENEFITS OF AXIS ANALYTICS ENVIRONMENT MONITORING SYSTEM

- » Cost effective, plug and play model
- » Dashboard view with different logins for multiple stakeholders
- » Helps you meet regulatory compliances
- » Real-time, remote monitoring of all stations
- » Timely alerts to avoid critical situations and regulatory non-compliance
- » Compatible with most 3rd party devices

MONITORING SOLUTION THROUGH AXIS ANALYTICS SOFTWARE

- » Real-time Water Quality Monitoring data transmission to SPCB & CPCB
- » CEMS data connectivity to SPCB & CPCB with Remote Calibration
- » IoT Cloud Connectivity Solution for the Pumping station, Field Instruments Connectivity with SCADA
- » 3 Way Valve Operation with SCADA Connectivity
- » Connectivity of PTZ Camera
- » Energy Monitoring System

WHY CHOOSE AXIS ENVIRONMENT MONITORING SYSTEM? :

1. Plug and play :

Easy to integrate sensors and analyzers

2. Remote 2-point calibration and diagnostics :

Calibrate sensors remotely and run diagnostics from your device using secure protocols.

3. Cloud-based :

Access data with secure login credentials from anywhere, from any device.

4. Live data and GUI :

Automated data collection tools for quantitative and qualitative data with advanced analysis. View live data in MIS and GUI view along with historic data downloads in multiple formats for regulatory exports.

5. Customizable Alerts with SMS and Email Integration :

Create, edit and delete custom alerts as per required parameters.

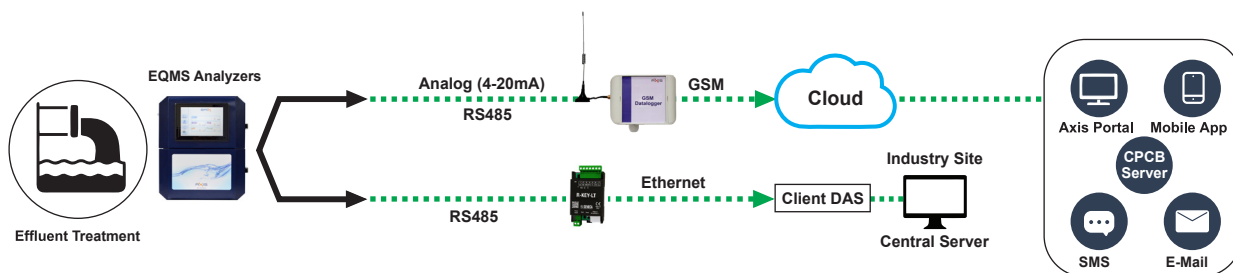
6. Geo-tagging :

Provides geographical identification to assets with built-in GIS mapping.

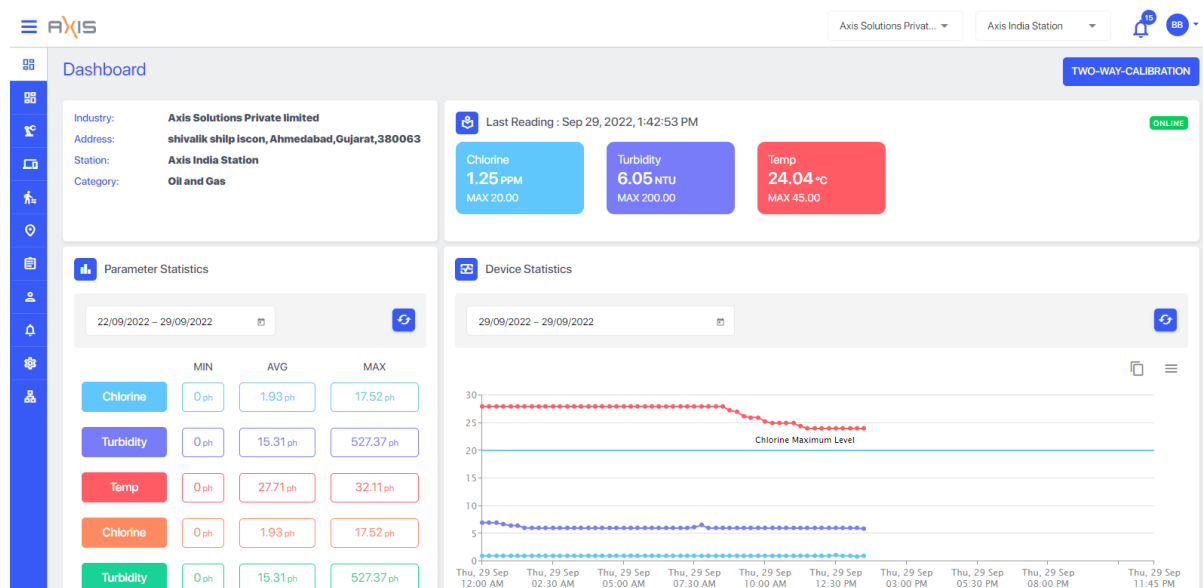
7. Service Support :

24x7 Service team available

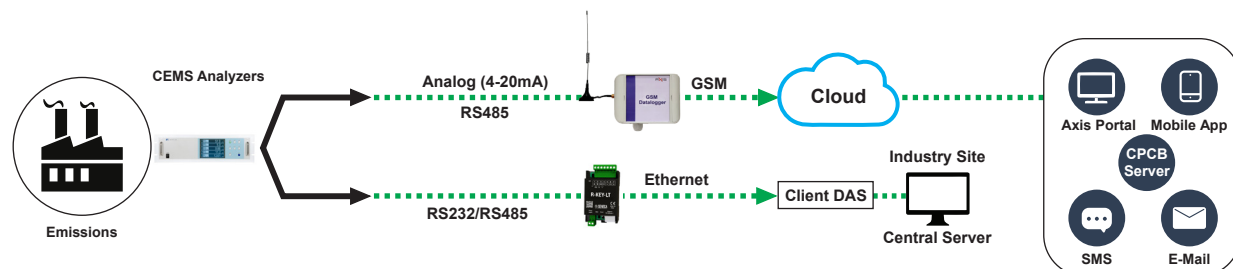
1. REAL-TIME WATER QUALITY MONITORING APPLICATION (EQMS)



APPLICATION PREVIEW



2. CEMS APPLICATION



APPLICATION PREVIEW

